



# ORACLE LIGHTING

## BRONCO SIDE MIRRORS

### ORACLE PART #5894-001

#### INSTALLATION GUIDE

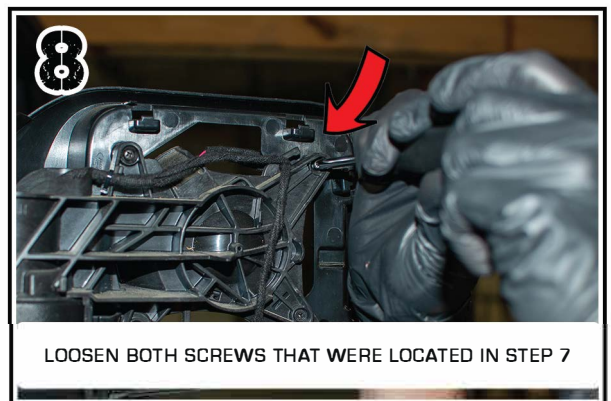
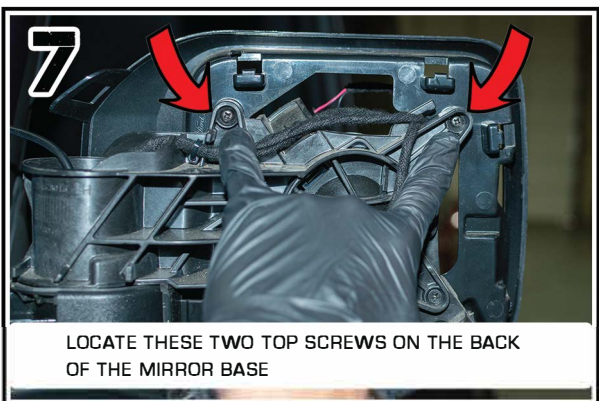
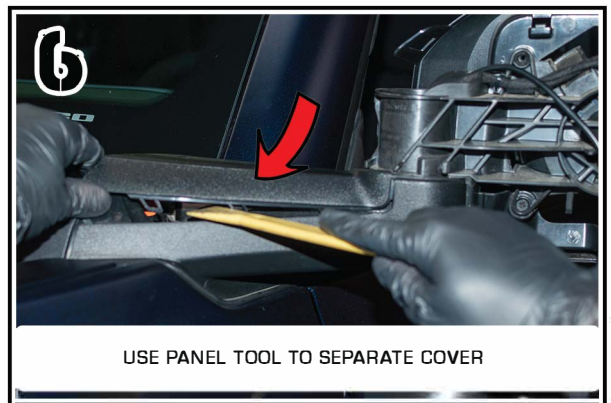
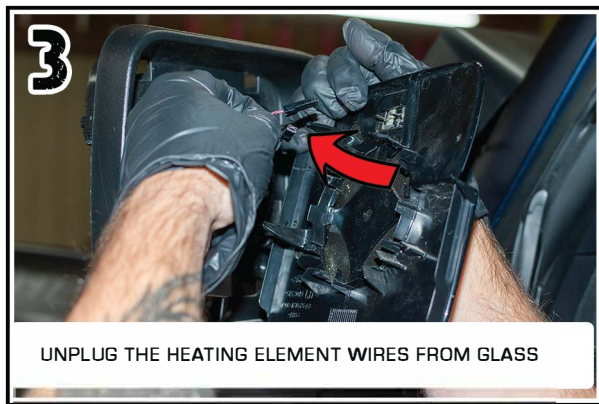
**TOOLS NEEDED:**  
PHILLIPS HEAD SCREWDRIVER  
PANEL TOOL  
T-25 TORX DRIVER  
WIRE CRIMPS AND STRIPPERS

## STEP: 1

WATCH THE VIDEO  
SCAN QR OR VISIT:



VIMEO.COM/771725082/5976EB83AD







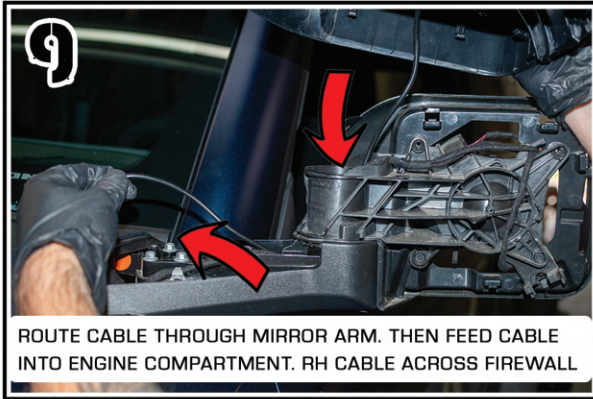
# ORACLE LIGHTING

## BRONCO SIDE MIRRORS

### ORACLE PART #5894-001

### INSTALLATION GUIDE

**TOOLS NEEDED:**  
PHILLIPS HEAD SCREWDRIVER  
PANEL TOOL  
T-25 TORX DRIVER  
WIRE CRIMPS AND STRIPPERS



ROUTE CABLE THROUGH MIRROR ARM. THEN FEED CABLE INTO ENGINE COMPARTMENT. RH CABLE ACROSS FIREWALL



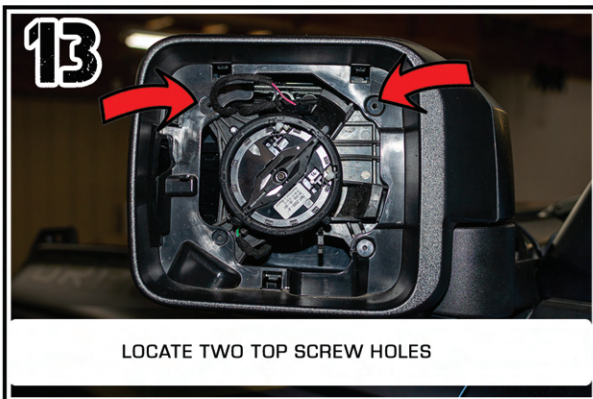
BEGIN INSTALLING MIRROR CAP. THIS END FIRST. BE SURE TO CLEAR ARM GASKET



SNAP ORACLE MIRROR CAP INTO PLACE



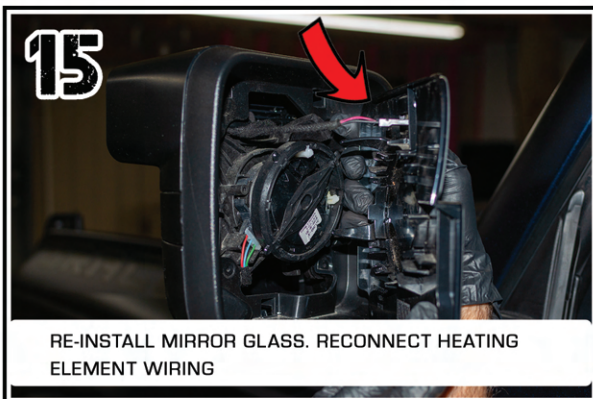
LOCATE TWO OF INCLUDED PHILLIPS SCREWS



LOCATE TWO TOP SCREW HOLES



INSTALL TWO PROVIDED PHILLIPS SCREWS



RE-INSTALL MIRROR GLASS. RECONNECT HEATING ELEMENT WIRING



CONNECT WIRES FACTORY AUX WIRE OR SWITCH OF YOUR CHOICE